

## Color Changing Hue

Date Code: 10/19



atomi™

# Smart Color Bulb

## User Manual



**Watch Video**

Open your smartphone camera and point it at the QR Code

## Thank you for purchasing the atomi Smart Bulb.

Manage household lighting anywhere, anytime with a tap of your smartphone. You can turn bulbs on and off, dim, adjust brightness and color, create different scenes and set wake and sleep timers.

It's easy to set up! Just download the atomi smart app from the App Store or Google Play to get started.

### Includes:



Smart Color Bulb



User Manual

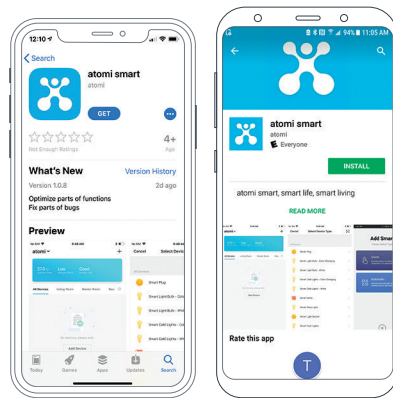
### Specifications

Input: 120~, 60Hz

### Before you begin

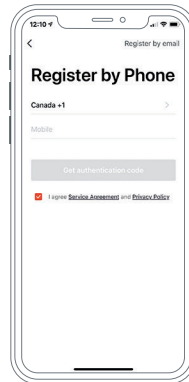
1. Know your Wi-Fi network and password.
2. Make sure your mobile device is running:
  - iPhone® 8 or higher and iOS® 8 or higher. Any previous iPhone® or iOS® may experience slower connections.
  - Android™ 4.1x or higher.
3. Make sure light/lamp source is always turned on.
4. Make sure you're connected to a 2.4GHz Wi-Fi network (atomi smart app can't connect to 5GHz networks).

## Step 1: Download App

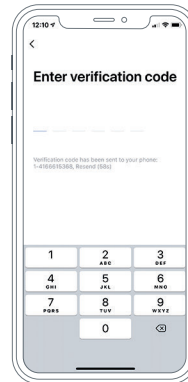


Download the atomi smart app from the App Store or Google Play.

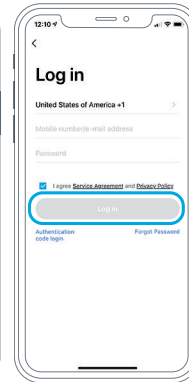
## Step 2: Register



Enter your mobile phone number or email address.

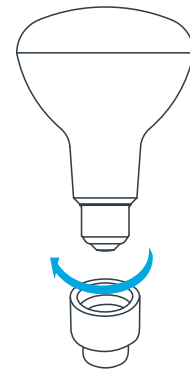


Enter the verification code and create a password.



Log into the app.

## Step 3: Plug In



Install your Smart Bulb into any socket. Turn the light or lamp source on and off until it rapidly blinks.

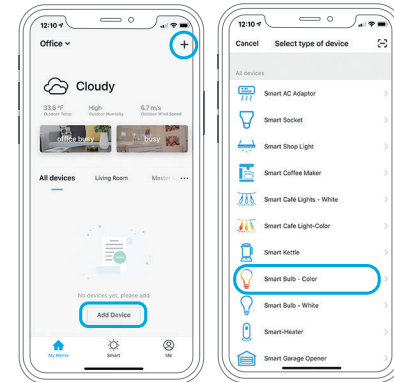


NOTE: Make sure the power switch controlling the Smart Bulb is turned off before installing.



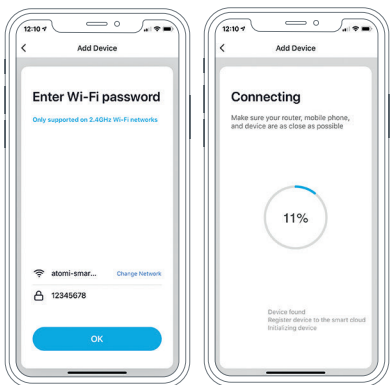
When the Smart Bulb is turned on, it will become hot as light is emitted. To avoid burning your hands, do not touch the Smart Bulb.

## Step 4: Add Device



Select "Add Device" or click (+) at the top right corner of the Devices screen.

Choose "Smart Bulb Color" from the Device list.



Enter your Wi-Fi network and password.

The atomi smart app will connect your device.



**ON/OFF**  
Press to turn Smart Bulb ON/OFF.

**Brightness**  
Adjustable temperature range from warm to cool.

**Controls**   **White Mode**

**Brightness Indicator**  
Indicates Smart Bulb brightness and hue status.

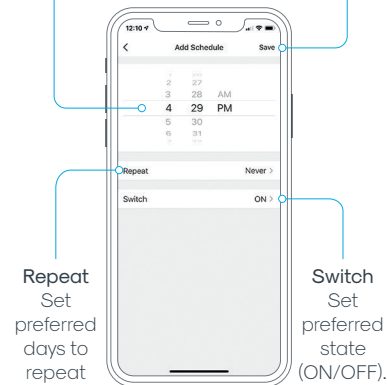


**Brightness & Saturation**  
Increase or decrease bulb brightness and saturation.

**Scenes**  
Select customized light scenes based on your mood.

**Color Mode**   **Scene Mode**

**Color**  
Select desired hue from color wheel.



**Repeat**  
Set preferred days to repeat schedule.

You can set up your Smart Bulbs to illuminate around your home at specific times on specific days of the week.

**Scheduling**

**Time**  
Set preferred scheduled time.

**Save**  
Confirm and save schedule.

**Switch**  
Set preferred state (ON/OFF).

**Troubleshooting**

**Cannot connect to your Wi-Fi network.**  
Make sure you entered the correct Wi-Fi password during the Wi-Fi setup. Check if there are problems with your internet connection. If the Wi-Fi signal is too weak, reset your Wi-Fi router and try again.

**How to reset the Wi-Fi connection.**  
Continuously turn the light off and on 5 times until the light blinks.

**Setup is not working properly.**  
1. Close all apps that are running in the background then re-open the atomi smart app.  
2. Uninstall and reinstall the atomi smart app then repeat the setup process.

**Smart Bulb is not responding to atomi smart app.**  
1. Check if Smart Bulb is turned off. If yes, turn it on and wait until Smart Bulb reconnects with the Wi-Fi network automatically.  
2. Check if there are problems with your internet connection. If necessary, reset your wireless router and try again.

**Smart Bulb appears to be offline.**  
Check the light switch and make sure that it's switched to ON. The Smart Bulb requires an "always-on" power supply to operate.

**FCC Notice:**

This device complies with Part 15 of the FCC Rules. Operation is subject to the two following conditions:

1. This device may not cause harmful interference.
2. This device must accept any interference received, including interference that may cause undesired operation.

**NOTE:** This equipment has been tested and found to comply with the limits for a Class B digital device, pursuant to Part 15 of the FCC Rules. These limits are designed to provide reasonable protection against harmful interference in a residential installation.

**CAUTION:** Suitable for indoor use only.  
**DO NOT IMMERSE IN WATER.**  
**DO NOT EXCEED RATED CAPACITY**

**WARNING**

This product can expose you to chemicals including Pb, which is known to the State of California to cause birth defects or other reproductive harm. For more information, go to [www.P65Warnings.ca.gov](http://www.P65Warnings.ca.gov).

For questions or concerns, email us at [support@atomiusa.com](mailto:support@atomiusa.com)  
Manufactured and marketed by Atomi, Inc.  
10 West 33rd St., New York, NY 10001  
atomi™ is a trademark of Atomi, Inc.  
Designed by atomi in New York. Made in China.

One-year limited warranty from date of purchase against defects in material and workmanship.  
Google is a trademark of Google LLC. Amazon, Alexa and all related logos are trademarks of Amazon.com, Inc. or its affiliates.

**Can't connect? Need help?**



**DO NOT RETURN THIS PRODUCT TO THE STORE**

Call 1-800-757-1440  
Mon-Fri 9:00 a.m. - 5:00 p.m. EST (US)  
or email us at [support@atomiusa.com](mailto:support@atomiusa.com)